

1338 4th Street, Santa Monica Retail for Lease



1334 Third Street Promenade, Suite 306, Santa Monica, CA 90401 Ph (310) 395-8383 F (310) 395-7872 www.TenzerCommercial.com

This statement with the information it contains is given with the understanding that all negotiations relating to the purchase, renting, or leasing of the property above shall be conducted through this office. The above information while not guaranteed has been secured from sources we believe to be reliable.

1338 4th Street, Santa Monica Information



Rental Rate:	\$3.38/sq. ft. per month NNN.
Triple net charges:	\$.50/sq. ft. per month.
Size:	Approximately 4,700 rentable sq. ft
Frontage:	50 feet.
Availability:	July 2011
Description:	Currently occupied by Wasteland apparel (who are moving to larger premises next door). New long-term lease may be available.
Comments:	Very nice free-standing building with high ceilings and two mezzanines. In the heart of downtown Santa Monica between Santa Monica Blvd. and Arizona Ave. Steps from public parking structure. One block from Third Street Promenade.
Link:	http://www.loopnet.com/lid/17147538

John Fremont
1johnfremont@gmail.com
License #00622302

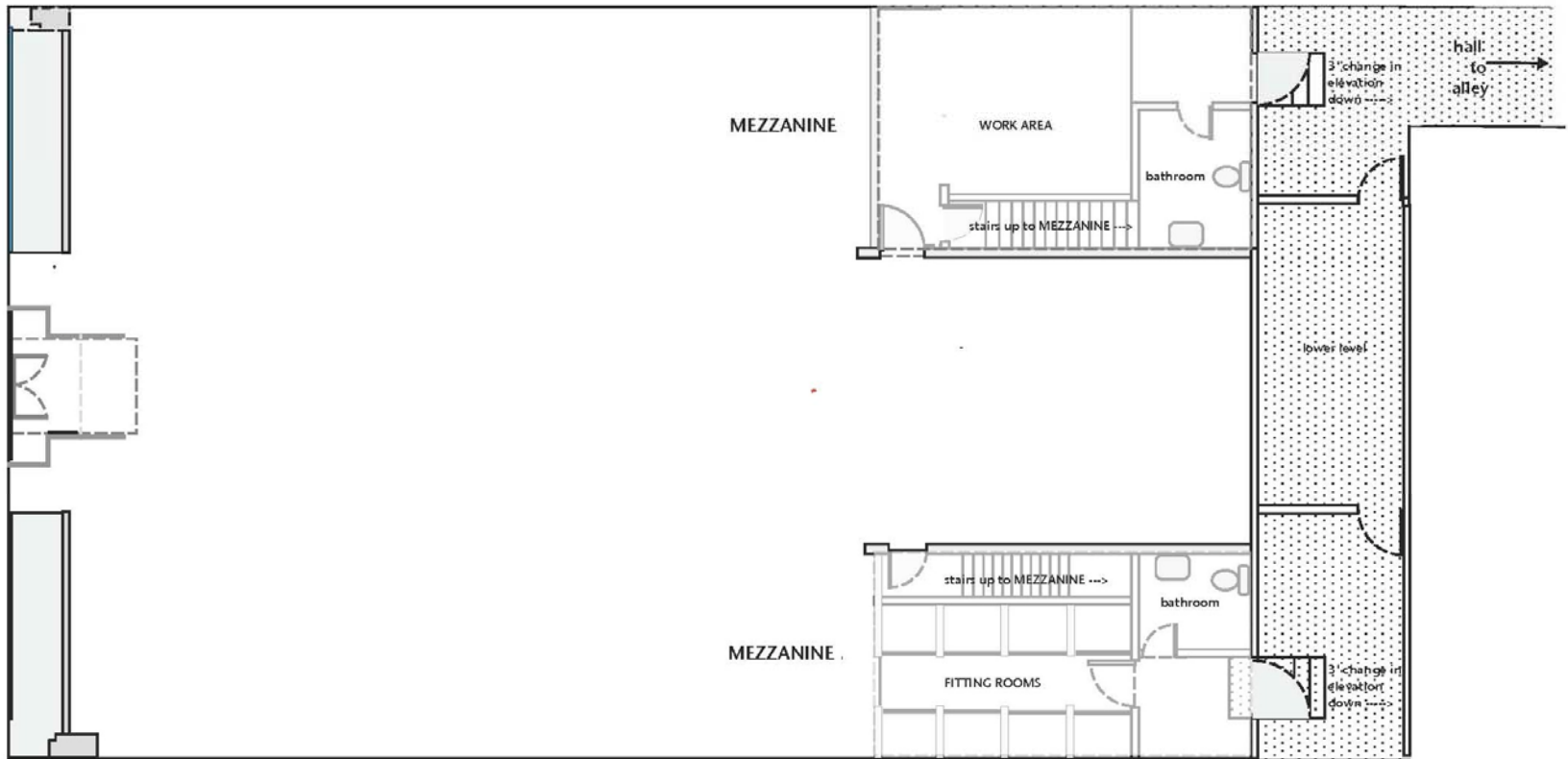
(310) 395-8383

1334 Third Street Promenade, Suite 306, Santa Monica, CA 90401 Ph (310) 395-8383 F (310) 395-7872 www.TenzerCommercial.com

This statement with the information it contains is given with the understanding that all negotiations relating to the purchase, renting, or leasing of the property above shall be conducted through this office. The above information while not guaranteed has been secured from sources we believe to be reliable.

Floor Plan

1338 4th St.
March 2011

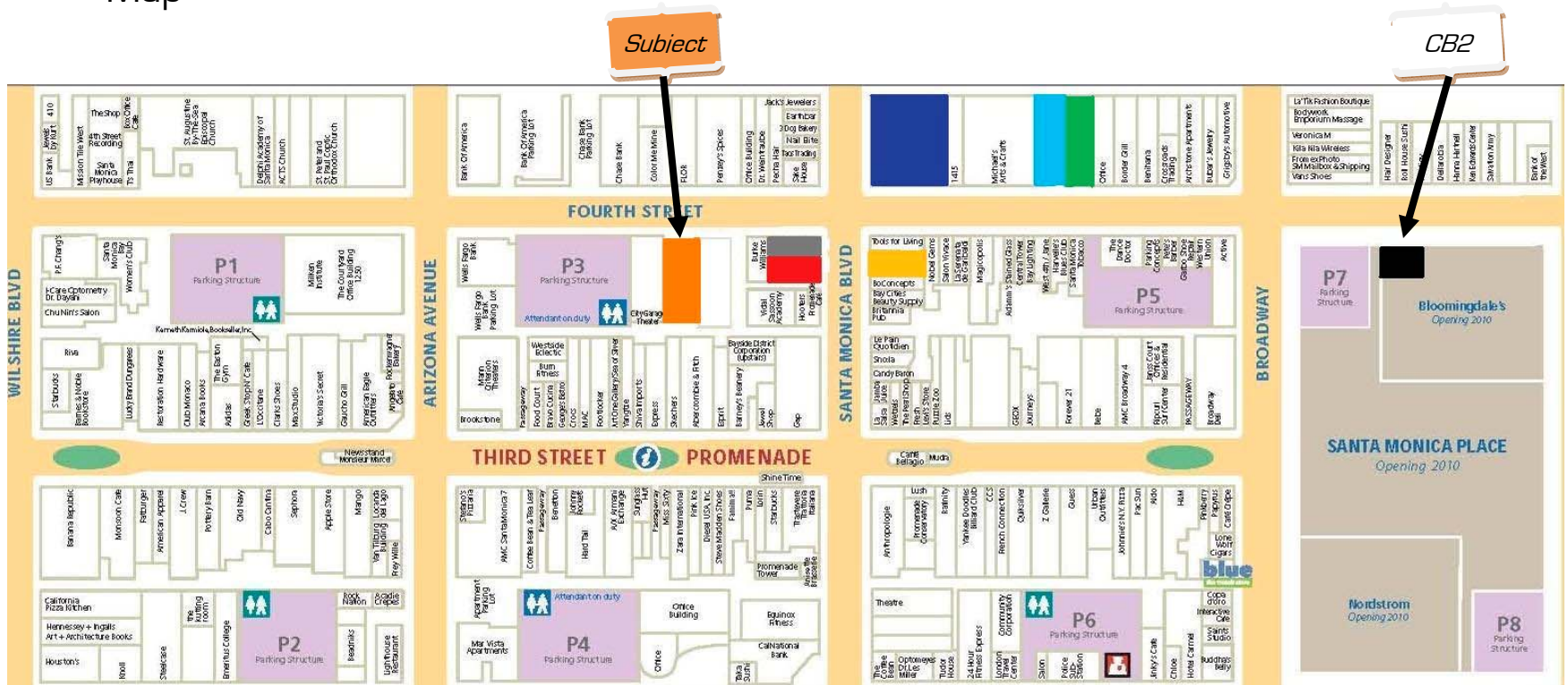


1334 Third Street Promenade, Suite 306, Santa Monica, CA 90401 Ph (310) 395-8383 F (310) 395-7872 www.TenzerCommercial.com

This statement with the information it contains is given with the understanding that all negotiations relating to the purchase, renting, or leasing of the property above shall be conducted through this office. The above information while not guaranteed has been secured from sources we believe to be reliable.

1338 4th Street, Santa Monica

Map



Surrounding Tenants:

- REI
- Jamba Juice
- Lulu lemon
- West Elm
- Pottery Barn
- Design within reach

Santa Monica Place Tenants:

- Kitson
- Nike
- Tiffany & Co.
- Louis Vuitton
- Charles David
- CB2
- And many more...